

MONTHLY MEMBERSHIP PROGRESS REPORT

District 31 L

Results as of: 5/31/2026

GMT:

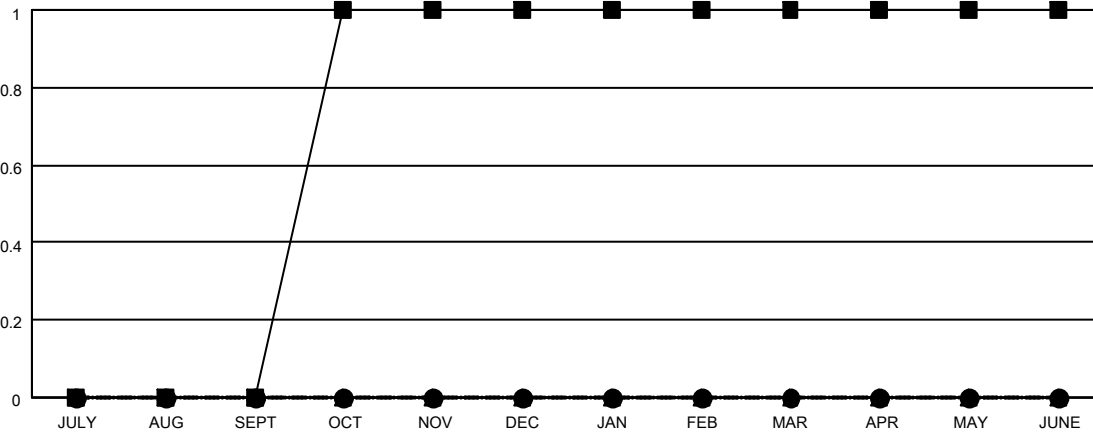
LOCATION NORTH CAROLINA

GMT CA

Clubs			
RESULTS FOR 2025-2026			
QUARTER	NEW CLUB GOAL	NEW CLUBS	DROPPED CLUBS
JULY/AUG/SEPT	0	0	0
OCT/NOV/DEC	1	0	1
JAN/FEB/MAR	0	0	1
APR/MAY/JUNE	0	0	0

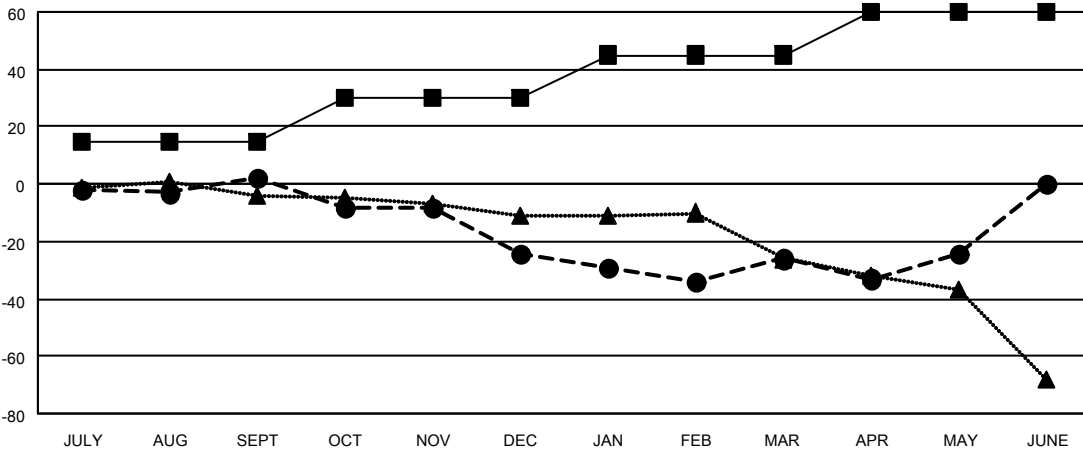
Members			
RESULTS FOR 2025-2026			
QUARTER	MEMBER GROWTH NET GOAL	MEMBER GROWTH ACTUAL	DROPPED MEMBERS ACTUAL (including transfers)
JULY/AUG/SEPT	15	22	16
OCT/NOV/DEC	15	21	41
JAN/FEB/MAR	15	30	18
APR/MAY/JUNE	15	17	15

GOALS AND ACTUAL NEW CLUBS CUMULATIVE



- - CURRENT YEAR GOALS FOR NEW CLUBS
- - CURRENT YEAR ACTUAL NEW CLUBS
- ▲ - LAST YEAR ACTUAL NEW CLUBS

GOALS AND ACTUAL MEMBERS CUMULATIVE



- - MEMBER GROWTH NET GOAL
- - MEMBER GROWTH ACTUAL
- ▲ - LAST YEAR MEMBERSHIP ACTUAL

DROPPED CLUBS: 2	21 CLUBS OF 42 ADDED 1 OR MORE NEW MEMBERS	GENDER DISTRIBUTION
		MALE 374 (58.90%)
		FEMALE 261 (41.10%)
DROPPED MEMBERS	CLICK HERE FOR CUMULATIVE MEMBERSHIP DATA	TOTAL FAMILY UNIT MEMBERS 160
DECEASED 10		FAMILY MEMBERS PAYING HALF DUES 82
CLUB CANCELLED 11		
OTHER 69		
TOTAL 90		